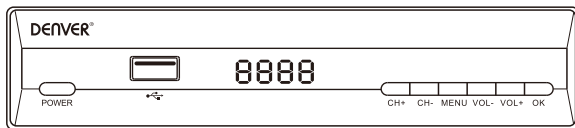


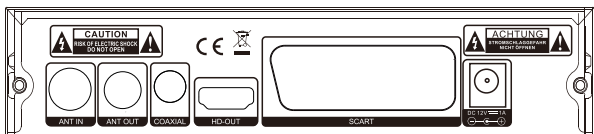
## 1. Control Elements

### Front Panel



POWER	Standby button
MENU	Open and close the menu screen
OK	Confirm a selection within a menu or enter channel list
Vol	Volume down and up
CH	Channel up and down
• USB	USB Port

### Rear Panel



ANT IN

ANT OUT

COAXIAL

HD OUT

SCART

DC -12V for Powe Adapter

# USER'S MANUAL

---

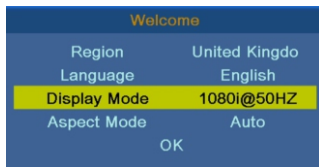
## 2.Remote Control



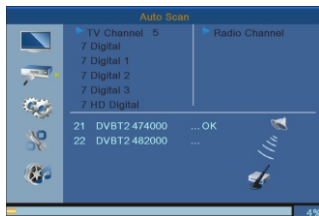
## 3. Basic Functions

### 3.1 First Installation

First installation shall setup some important configures. It contains several options shown as figures below:



User can select Region, Language, Display Mode, Aspect Mode from this menu, when it is complete, user can use “OK” to search channels as shown in the figure below:



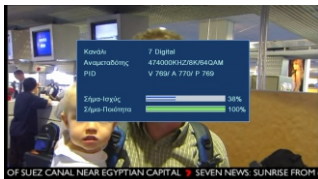
### 3.2 Display Information Of Programs

Press key “INFO” to show the information of current programs when it is in normal playing state.



# USER'S MANUAL

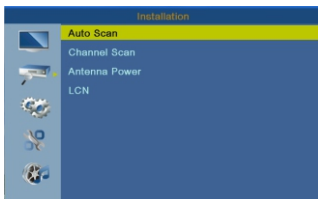
---



## 4. Installation

There are two kinds of installation mode as follow:

- 1 DVBT channel Scan
- 2 DVBT Auto Scan



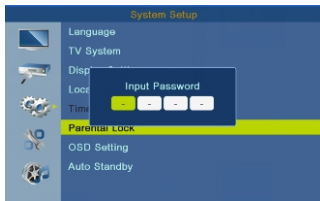
You can press "Right "button to enter into this menu, then press "up/down/ right/left" to choose and change below functions:

- DVBT channel Scan
- DVBT Auto Scan
- LCN ~ to be on or off

## 5.Tool

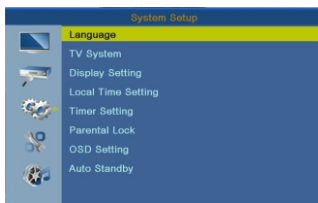
### Parental Lock

1. The input default password is "1234".
2. If "menu lock " on,You can lock the menu of channel edit and searching.
3. If parental rating choose"18 years",that can lock the adult channels.



## 6.System Setup

System setup menu can provide convenient system setup, as shown below:



Press "Right" button to enter this menu and press up/down to choose and do the edit as you want.

Language

TV System

Display Setting

Local Time Setting

Timer Setting

Parental Lock

OSD Setting

## 7. Software Update

### Upgrade by USB



Please make sure don't shut down the power in the upgrade process;  
When upgrade finish, system will automatic restart with the new firmware

Please notice - All products are subject to change without any notice. We take reservations for errors and omissions in the manual.

ALL RIGHTS RESERVED, COPYRIGHT DENVER ELECTRONICS A/S

# DENVER®

[www.denver-electronics.com](http://www.denver-electronics.com)



Electric and electronic equipment and included batteries contains materials, components and substances that can be hazardous to your health and the environment, if the waste material (discarded electric and electronic equipment and batteries) is not handled correctly.

Electric and electronic equipment and batteries is marked with the crossed out trash can symbol, seen below. This symbol signifies that electric and electronic equipment and batteries should not be disposed of with other household waste, but should be disposed of separately.

As the end user it is important that you submit your used batteries to the appropriate and designated facility. In this manner you make sure that the batteries are recycled in accordance with legislature and will not harm the environment.

All cities have established collection points, where electric and electronic equipment and batteries can either be submitted free of charge at recycling stations and other collection sites, or be collected from the households. Additional information is available at the technical department of your city.

# USER'S MANUAL

---

Hereby, Inter Sales A / S hereby declares that the DTB-134 radio equipment complies with Directive 2014/53 / EU. The full text of the EU Declaration of Conformity is available at the following Internet address:

Please enter "www.denver-electronics.com". Then click on the search SYMBOL in the top bar of the website and enter here the model number "dtb-134". You will now reach the product page. The Radio Equipment Directive (Directive 2014/53 / EU) can be found at "downloads / other downloads".

Operating Frequency Range: 177.5~858 MHz  
Max Output Power: 10W

DENVER ELECTRONICS A/S

Omega 5A, Soeften  
DK-8382 Hinnerup  
Denmark

[www.facebook.com/denverelectronics](http://www.facebook.com/denverelectronics)