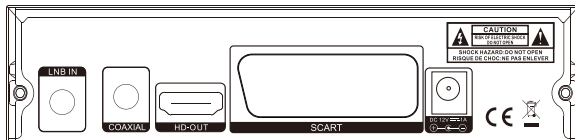


# 1 Front Panel and Back

POWER Standby button



## 2 Remote Control



1. STANDBY: Switch The Standby Mode
2. EPG: Electronic Program Guide
3. INFO: Show The Current Program Information
4. AUDIO: Choose Audio language Or Audio Mode
5. FAV: Enter Favorite List
6. MENU: Enter The Main Menu
7. CH+: Change Channel+
8. V+/-: Change Vol
9. CH-: Change Channel-
10. P+: Page Up
11. Number (0~9): Select A Channel Or Setting
12. REV: Return
13. FWD: Forward
14. Play/Pause
15. MUTE: Mute Or Restore Audio Output
16. PVR: Personal Video Recording
17. SUBTITLE: Select Subtitle Language
18. Exit: Exit The Current Menu
19. OK
20. P-: Page Down
21. RECALL: Return To Last Playing Program Or Last Operation
22. Go To
23. Next
24. PRVE: Return To Last Page
25. REC: Record Program
26. Stop
- 27.28.29.30. Multi-Function Key

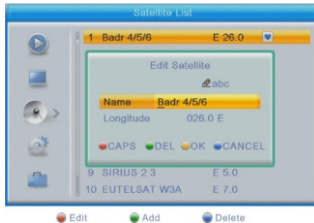
### 3 Installation

#### Satellite List

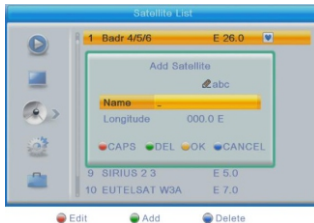
When you enter to "Satellite List" menu, there will display the screen like below: ([OK] key to select satellite)



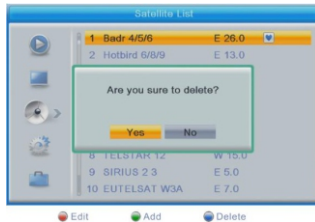
- 1 Press [Red] key, you can enter edit satellite menu. You can edit Satellite name and satellite longitude.



- 2 Press [Green] key, you can enter add satellite menu.



- 3 Press [Blue] key, you will be asked “Are you sure to delete?”. Select “Yes” to delete the satellite that highlight focus on. Select “No” to cancel the operation.



### Antenna Setup

If you select “Fixed Antenna” in “Antenna Connection” menu, there will display the screen like below:

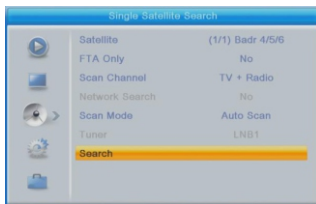


In Antenna Setup mode:

- 1 Satellite: In this item, press [Volume Up/Volume Down] key can switch Satellites and press [OK] key can enter satellite list for you to select directly.
- 2 LNB Freq: In this item, press [Volume Up/Volume Down] key can select the parameter. Option is  
5150/5750/5950/9750/10000/10050/10450/10600/10700/10750/11250/11300/5150-5750/5750-5150/Universal(9750-10600)
- 3 DiSEqC1.0: You can use [Volume Up/Volume Down] key to switch options. There are several options for your selection: Disable/LNB1/LNB2/LNB3/LNB4
- 4 22K: You can use [Volume Up/Volume Down] key to switch “ON/Off”. When this item is switched to “ON”, receiver will receive TV and radio input signal from 22K port. If the item is switched to “Off”, the receiver will receive all signal from 0K port.

## Single Satellite Search

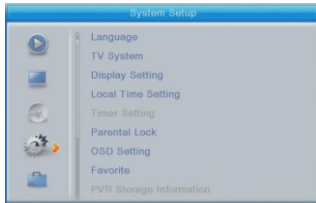
When you enter to “Single Search” menu, there will display the screen like below:



- 1 In “Satellite” item, press [Volume Up/Volume Down] key to select satellite, which you to scan. Otherwise, press [OK] key can open the “satellite list” for you to select directly.
- 2 In “FTA Only” item, press [Volume Up/Volume Down] key to select scans all channels or just scans free channels. If you select “Yes”, it will scan free channels only.
- 3 In “Scan Channel” item, press [Volume Up/Volume Down] key to select scans TV + Radio Channels, or just TV channels or just Radio channels.
- 4 In Network Search, press [Volume Up/Volume Down] key to select whether network search or not.

## 4 System Setup

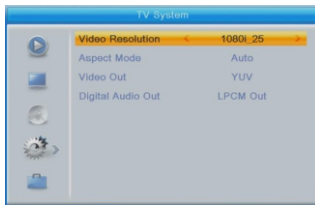
When you press [Menu] key to enter menu, there will display the picture like below:



- 1 Press [Up/Down] key to select menu
- 2 Press [OK] or [Right] key to enter the "Installation". If Menu Lock is "On", it will display an dialogue for user to key in password. The default Password is "0000".
- 3 Press [Up/Down] key to select menu items.
- 4 Press [Left] key or [Exit] key to go back to main menu.

## TV System

When you enter to "TV System" menu, you will see the screen like below:

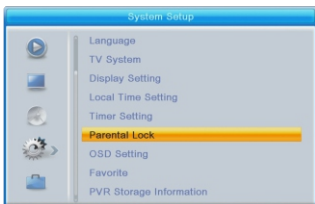
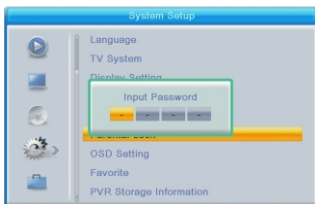


- 1 Video Resolution is for switching the system outputting video resolution. Move highlight on it and press left or right key, it will switch video resolution circularly by the sequence 480i <-> 576i under RGB mode and 480P <-> 576i <-> 576P <-> 720P50 <-> 720P60 <-> 1080i25 <-> 1080i30 <-> 1080P50 <-> 1080P60 <-> 1080P25 <-> 1080P30 <-> 1080P24 under YUV mode.  
Aspect Mode is for switching the screen aspect ratio mode. Now we provide below options: 4:3 PS/4:3 LB/16:9/Auto. Video Out is for setting the video output mode. It has option: RGB, YUV.
- 2 Digital Audio Out is for setting the both SPDIF and HDMI's digital audio output mode, it has options LPCM Out, BS Out and Auto, You can press [Left/Right] Key to select each mode circularity.
- 3 Press [Exit] key to draw back from "TV System" menu.

## 5 Tool

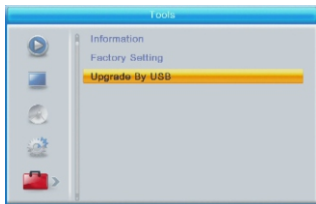
### Parental lock

- 1.The input default password is“0000”.
- 2.If“menu lock”on, then you can lock the menu of channel edit and searching.
- 3.If parental rating choose“18 years”, that can lock the adult channels.



### Upgrade By USB

When you enter to “Upgrade By USB” menu, you will see a screen as below:



Upgrade Mode has only 1 option: All Code, it means that you can only upgrade whole file to your STB's flash. Please rename your new fw file name to be the format “all\*.bin”, \* means any others string is acceptable, but the initial 3 letters must be “all” and the extension name must be “.bin”. Then Press OK key to start upgrade by USB.



Please notice - All products are subject to change without any notice. We take reservations for errors and omissions in the manual.

ALL RIGHTS RESERVED, COPYRIGHT DENVER ELECTRONICS A/S

# DENVER®

[www.denver-electronics.com](http://www.denver-electronics.com)



Electric and electronic equipment and included batteries contains materials, components and substances that can be hazardous to your health and the environment, if the waste material (discarded electric and electronic equipment and batteries) is not handled correctly.

Electric and electronic equipment and batteries is marked with the crossed out trash can symbol, seen above. This symbol signifies that electric and electronic equipment and batteries should not be disposed of with other household waste, but should be disposed of separately.

As the end user it is important that you submit your used batteries to the appropriate and designated facility. In this manner you make sure that the batteries are recycled in accordance with legislature and will not harm the environment.

All cities have established collection points, where electric and electronic equipment and batteries can either be submitted free of charge at recycling stations and other collection sites, or be collected from the households. Additional information is available at the technical department of your city.

Hereby, Inter Sales A/S declares that the radio equipment type DVBS-205HD MK2 is in compliance with Directive 2014/53/EU. The full text of the EU declaration of conformity is available at the following internet address: [www.denver-electronics.com](http://www.denver-electronics.com) and then click the search ICON on topline of website. Write model number: DVBS-205HD MK2. Now enter product page, and red directive is found under downloads/other downloads.  
Operating Frequency Range:950~2150MHz  
Max Output Power:10W

DENVER ELECTRONICS A/S  
Omega 5A, Soeften  
DK-8382 Hinnerup  
Denmark  
[www.facebook.com/denverelectronics](https://www.facebook.com/denverelectronics)