

DENVER[®]

VPL-118

Suitcase Turntable Player



Instruction Manual

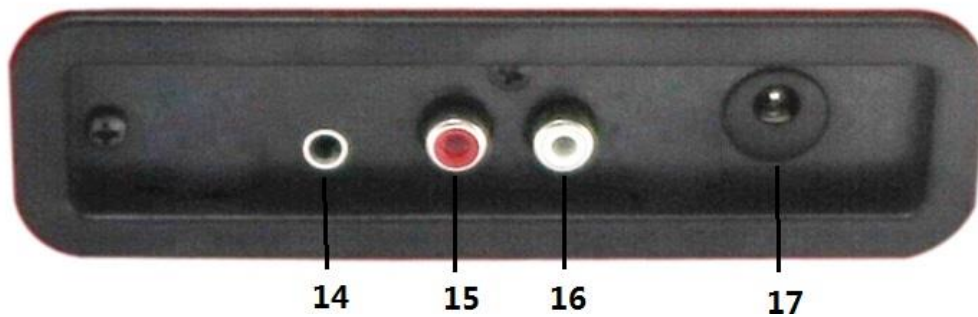
READ INSTRUCTIONS CAREFULLY BEFORE USE AND STORE

IN A SAFE PLACE FOR FUTURE REFERENCE

DESCRIPTION



1. Lock catch
2. Dust cover
3. Adapter - Use this when playing 45rpm records with cut out centers.
4. Tone arm lift
5. Auto stop control
6. Speed selection - Three speed for choice: 33.3, 45, 78 rpm.
7. LED power indicator
8. Power switch / Volume control
9. Headphone jack
10. Tone arm
11. Speaker
12. Cartridge
13. Carrying handle



- 14. Aux in
- 15. Line out R channel
- 16. Line out L channel
- 17. DC power jack

INITIAL SET-UP

MAINS CONNECTION

Ensure that the mains voltage of your home corresponds to the operating voltage of the unit. Your unit is ready to be connected to a mains voltage of 5V DC adaptor.

AMPLIFIER CONNECTION (if required)

Whilst you can listen to your new turntable using the built in speakers you may wish to connect it to your existing Hi Fi system. Connect the audio plugs to the Line input on your mixer or amplifier using an RCA cable (not supplied)

- **Red plug into R/H channel input.**
- **White plug into L/H channel input.**

Playing a record

- Place the record of your choice on the turntable. If required, do not forget to place the adaptor on the record spindle.
- Choose the desired playing speed using the speed selection switch between 33.3, 45 and 78rpm.
- Turn on the Rotary Power Switch, note that this also controls volume.
- Release the tone arm lock.
- Raise the arm with your hand lightly.
- Place the stylus vertically over the first track of the record, the turntable will start turning automatically.
- Put down the stylus slowly on to the record to play.
- When a record comes to the end, it could be controlled by auto-stop

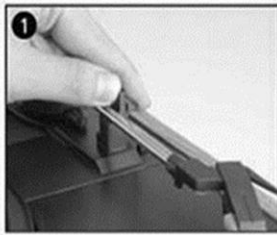
ON/OFF switch to set as your favorite.

- Lift up the tone arm and put it on the rest when finished.
- Replace the protective cap on the stylus and close the tone arm lock.
- Turn off power at mains.

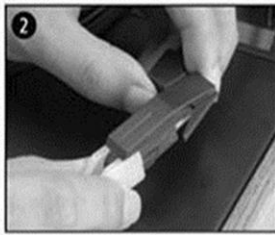
MAINTENANCE

REPLACING THE STYLUS

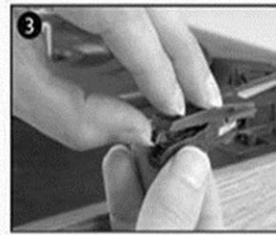
-Refer to the figures 1-8



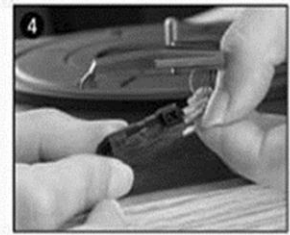
push the arm lock to release the tone-arm.



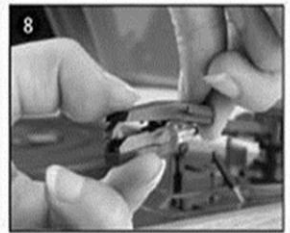
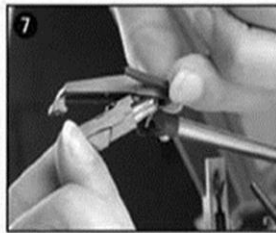
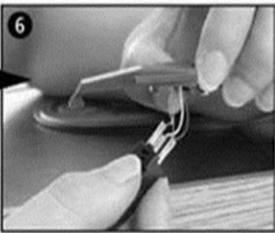
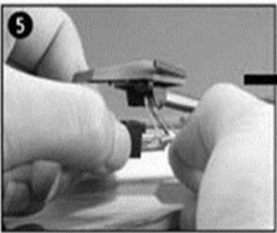
take off cap of the cartridge to expose the needle out.



separate the cartridge from the socket lightly.



take off the audio-line from the cartridges completely.

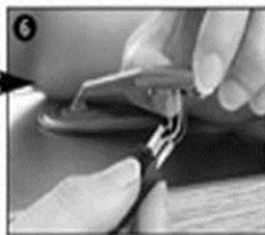
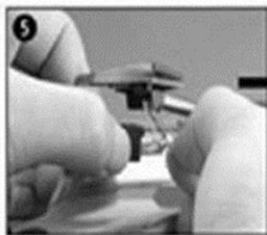


to fit a new one just in opposite deals. insert the audio-line accordingly, and install the cartridge to the socket lightly.

NOTE: Please exercise extreme care whilst performing this operation so as to avoid the tone arm and audio line wires from any damage.

INSTALLING A NEW STYLUS CARTRIDGE

-Refer to the figures 5 & 6



NOTES

We advise you to clean your records with an anti-static cloth to gain maximum enjoyment from them and to make them last.

We would also point out that for the same reason your stylus should be replaced periodically (approximately every 250 hours)

Dust the stylus from time to time using a very soft brush dipped in alcohol (brushing from back to front of the cartridge)

WHEN TRANSPORTING YOUR RECORD PLAYER DO NOT FORGET TO:

- Replace the protective cap on the stylus.
- Put the rest clip into the pick-up arm.

Accessories included:

- power adaptor
- User manual
- 45 RPM adaptor

ALL RIGHTS RESERVED, COPYRIGHT DENVER ELECTRONICS A/S

DENVER®

www.denver-electronics.com



Electric and electronic equipment contains materials, components and substances that can be hazardous to your health and the environment, if the waste material (discarded electric and electronic equipment) is not handled correctly.

Electric and electronic equipment is marked with the crossed out trash can symbol, seen below. This symbol signifies that electric and electronic equipment should not be disposed of with other household waste, but should be disposed of separately.

All cities have established collection points, where electric and electronic equipment can either be submitted free of charge at recycling stations and other collection sites, or be collected from the households. Additional information is available at the technical department of your city.

DENVER ELECTRONICS A/S

Omega 5A, Soeften

DK-8382 Hinnerup

Denmark

[facebook.com/denverelectronics](https://www.facebook.com/denverelectronics)