

ACT-5040W Quick Start Guide

Foreword

Thank you for purchasing our WIFI DV. Before use, please carefully read this User's Manual for best performance and longer service life of this product, and properly keep this manual for future reference.

This manual covers the latest information while it was prepared. The displays and pictures used in this manual are for better understanding of the operation of the product. Due to technical reasons and different production batches, the DV you receive may be different from how it is described herein.

System requirement

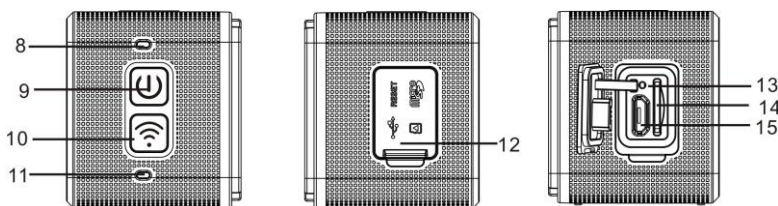
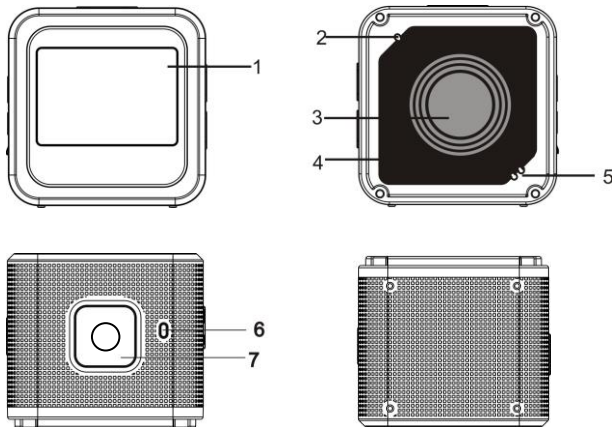
Before using and operating your DV, please know the minimum system requirement to operate it and we strongly recommend you to use a better PC to operate the product for best performance of the DV. The minimum system requirement to operate the product is as below:

System Requirements	
Operating System	Microsoft system: Microsoft Window 2000, XP, Vista, 7, 8 Apple system: Mac OS X ver: 10.0.0 or above version
CPU	Intel Pentium of more than 1GB Hz or other CPU with equivalent performance
Internal Memory	Larger than 1GB
Sound Card and Display Card	The sound card and video card shall support DirectX8 or higher version.
CD Driver	Speed of 4 times or faster
Hard Disk	Free space of more than 2GB
Others	USB 1.1 or USB 2.0 port

Features and functions

- Wifi , photo shooting, video recording, , Timelapse
- 1.37-inch color display
- 5m effective pixels
- Built-in 800mah Battery for power supply
- USB port + TF card slot
- G-SENSOR (Under Photo/Video mode, it can automatically rotate 180°)

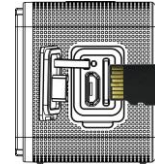
Appearance and buttons



- | | |
|------------------------------------|---|
| 1. 1.4-inch color display | 2. Buzzer |
| 3. Lens | 4. Lens Glass Sheet |
| 5. Loudspeaker | 6. Charging Indicator (blue) |
| 7. Shutter button | 8. busy indicator (indicator for video/photo mode)(red) |
| 9. Power/Menu | 10. WiFi/Selection |
| 11. WiFi Indicator (red) | 12. Dust Cover |
| 13. Reset | 14. TF Card Slot (Insert TF Card) |
| 15. Micro-USB port (connecting PC) | |

I. Using your Wifi DV for the first time

1. Insert a micro SD or a micro SDHC card first, see right picture



Please notice: UHS (ultra highspeed) cards doesn't work, as they are not 100% backward compatible

High speed card of Class 6 or above is recommended. When using professional video mode, Class 10 is required.

Turn off your DV before inserting/removing card.

2. Power on/off

Power on: press the button and hold for 3 seconds, The Video indicator lights in red (Video mode by default after power-on)

Power off: press the button and hold for 3 seconds, the buzzer will beep once.

3. Charging battery

Built-in lithium battery is applied to this device. While power-off, connect the DV to the PC by a USB cable to charge the battery; while charging, the charging indicator will remain on. It takes about 3 to 4 hours to fully charge the battery, and the indicator will go off when charging completes.

Remark: blue lamp while charging, red lamp while working and in wifi mode;

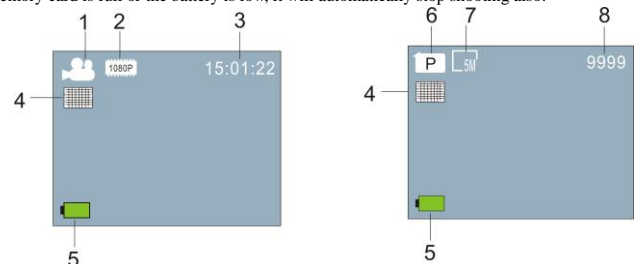
4. Function mode switch

6 modes are available for this camera including Video Recording, Photo, Continuous Shooting, Timelaps, Playback and Setting. Start up the camera, and press Power button to enter Mode interface; please press WIFI button to select a mode, and then press Shutter button to confirm; then it will enter the mode you've chosen, and the chosen mode will be displayed with background color; (as shown below)



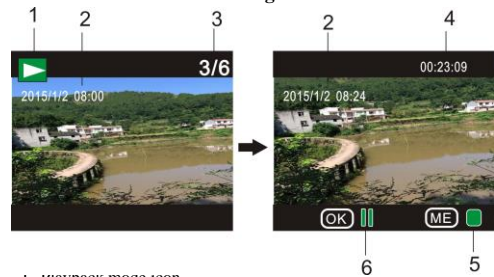
5. Mode Preview

Start it up, and the camera will directly enter Video Recording mode; under preview mode, press Shutter button to conduct video recording; press Shutter button again, it will stop shooting; if the memory card is full or the battery is low, it will automatically stop shooting also:



6.3 Frames under Playback Mode Introduction:

6.3.1 Frames of Video Recording File

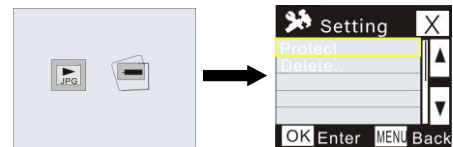


1. Playback mode icon
2. The date for video recording
3. Current File Number/Total Files
4. Playback Timer
5. Operation Indicator Icon (Press Power Button to stop)
6. Operation Indicator Icon (Press Shutter button for Pause)

Note: Under playback mode, press WIFI button to select other photos/video recording files to realize loop selection.

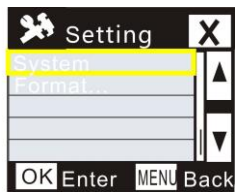
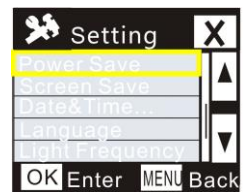
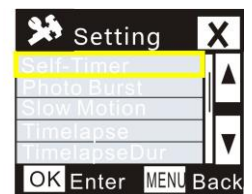
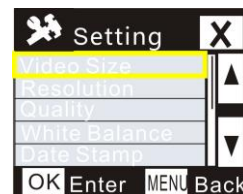
6.4 Playback Mode Menu Setting

Quit from Playback mode, and press Power button to enable the mode interface; select Setting mode, and press Shutter button to enter Menu; then press WIFI button to select Menu; press Shutter button again to enter Sub-menu; the chosen Item in the Menu will be displayed with background color; press WiFi button again to select the secondary sub-menu and press Shutter button for confirmation; press Power button to quit from Menu setting.

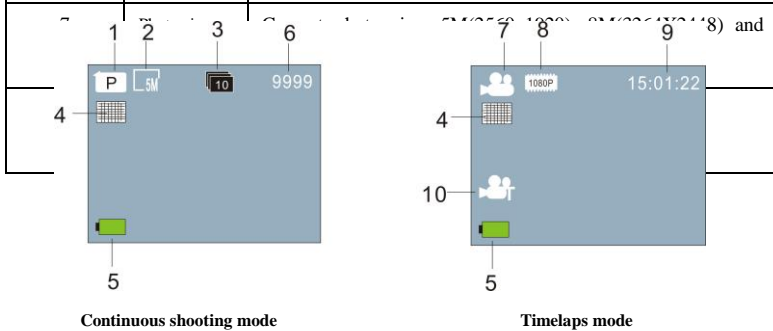


7. Menu Setting

Under Video Recording/Photo and Timelaps mode, press Power button to enable the mode interface; select a mode you need to set, and press Shutter button to enable the Menu; then, press WiFi button to select Menu, and press Shutter button to enter Sub-menu; the chosen item in the Menu will be displayed with background color; press WiFi button again to select secondary sub-men, and press Shutter button for confirmation; press Power button to quit from Menu Setting.



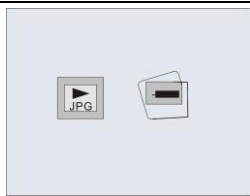
No.	Icon Name	Description
1	Video mode	It is under Video mode
2	Video resolution	Current Resolution: 1920x1080 30 frame; 1280x720 60 frame/30 frame are optional;
3	Recording Time	It indicates the currently available recording time.
4	Quality	It indicates excellent current quality.
5	Battery Icon	It indicates current battery is full.
6	Photo mode	It is under Photo mode



Continuous shooting mode

Timelaps mode

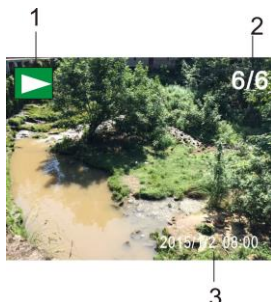
No.	Icon Name	Description
1	Photo mode	It is under Photo mode
2	Photo size	Current photo size: p5M(2560x1920), 8M(3264X2448) and 3M(2048X1536) are optional.
3	Continuous Shooting	10 photos can be shot continuously; 3/5 photos are optional.
4	Quality	It indicates excellent current quality.
5	Battery icon	It indicates current battery is full.
6	Number of Photo	It indicates current number of photo can be taken.
7	Video mode	It is under Video mode
8	Video resolution	Current resolution: 1920x1080 30 frame; 1280x720 60 frame/30frame are optional.
9	6. Playback mode:	6.1 Recording mode: enter Video Recording mode, then press Power button to enter selection; press WIFI button to select playback mode, and press Shutter button to enter Timelaps icon (as shown below):
10	Timelaps mode	It is under Timelaps mode for recording.



Playback mode

6.2 Photo Example

1. Playback Mode Icon
2. Current File Number/Total Files
3. The date of photo



APP (support Android and iOS)


I. Installing the APP

1. For Android, search for "DENVER ACTION CAM 2" at Play Store and install the APP according to the prompt.
2. For iOS, search for "DENVER ACTION CAM 2" at APP Store and install the APP according to the prompt.

II. Android APP


ACT-5040W Quick Start Guide

1. Install **DENVER ACTION CAM 2APP** (obtained from your vendor or internet) on

your Android smart phone or tablet, the icon  will display on the screen;

2. Insert card and power on the DV, press the Wi-Fi button to enable Wi-Fi, the Wi-Fi indicator will flash, and then remain on after successful connection;

3. Enable Wi-Fi on your phone or tablet, search for wireless AP name DENVER ACT-5040W and connect, the system will display when connection successes;

4. Click the APP icon  on your phone or tablet, you can see the preview picture (see picture below) of the DV on your phone or tablet, then you can operate the DV.



- 1. Video resolution
- 2. White balance
- 3. Setting (enter setting menu)
- 4. Rest recording time
- 5. WIFI signal icon
- 6. Battery level of the DV
- 7. Timelaps mod
- 8. Photo mode
- 9. Video mode
- 10. Video button
- 11. Enter playback mode

III. iOS APP


1. Install **DENVER ACTION CAM 2APP** (obtained from your vendor or internet) on

your iPhone or iPad, the icon  will display on the screen;

2. Insert card and power on the DV, press the Wi-Fi button to enable Wi-Fi, the Wi-Fi indicator will flash, and then remain on after successful connection;

3. Enable Wi-Fi on your iPhone or iPad, search for wireless AP name DENVER ACT-5040W and connect, the system will display when connection successes;

Remark: for first use, please enter password: 1234567890.

4. Click the APP icon  on your iPhone or iPad, you can see the preview picture (see picture below) of the DV on your phone or tablet, then you can operate the DV.



- 1. B
- 2. Video resolution
- 3. Rest recording time
- 4. Setting (enter setting menu)
- 5. Video button
- 6. Photo mode
- 7. Timelaps mode
- 8. Video mode
- 9. Playback mode
- 10. Playback mode

Note:

1. You need to insert a TF card into the DV to take or download picture via your phone or tablet;
2. After successful connection between your phone/tablet and the DV, the Wi-Fi indicator will remain on.

Technical parameters

Image sensor	5m pixels (CMOS)
--------------	------------------


Function mode	Video recording, photo taking, continuous shooting, timelaps, Playback mode, Setting Mode
Lens	F3.1 f=2.9mm
Video resolution	FHD: 1920x1080(30fps) H: 1280x720 (60fps)、L: 1280x720 (30fps)
File format	Video H.264 (MOV)
	Photo JPG
Storage	TF card (up to 32GB)
USB port	High speed USB 2.0/3.0 port
Power Supply	Built-in lithium battery: 800mAh
Dimensions	42*42*38mm

ALL RIGHTS RESERVED, COPYRIGHT DENVER ELECTRONICS

A/S

Warning

- Lithium battery inside!
- Do not try to open the product!
- Do not expose to heat, water, moisture, direct sunlight!



CAUTION!

DENVER[®]

www.denver-electronics.com



Electric and electronic equipment and included batteries contains materials, components and substances that can be hazardous to your health and the environment, if the waste material (discarded electric and electronic equipment and batteries) is not handled correctly.

Electric and electronic equipment and batteries is marked with the crossed out trash can symbol, seen below. This symbol signifies that electric and electronic equipment and batteries should not be disposed of with other household waste, but should be disposed of separately.

As the end user it is important that you submit your used batteries to the appropriate and designated facility. In this manner you make sure that the batteries are recycled in accordance with legislature and will not harm the environment.

All cities have established collection points, where electric and electronic equipment and batteries can either be submitted free of charge at recycling stations and other collection sites, or be collected from the households. Additional information is available at the technical department of your city.

Imported by:

DENVER ELECTRONICS A/S

Stavneagervej 22

DK-8250 Egaa

Denmark

www.facebook.com/denverelectronics